

Multi-Voltage Conventional Relays



Models Available

Potted with Pigtail Series

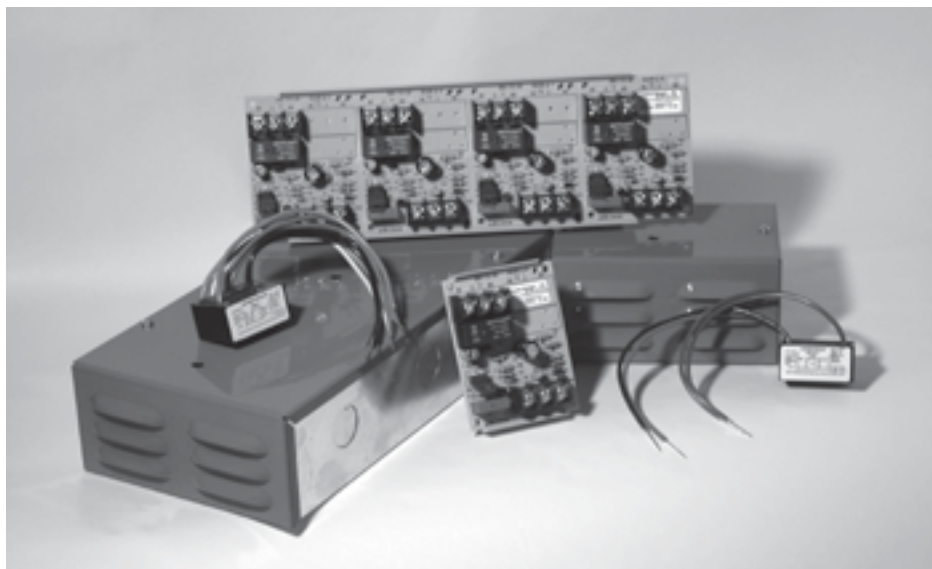
- PR-1/PR-2/PR-3 Epoxy encapsulated (SPDT) relays with an activation LED
- EOLR-1 End of Line Epoxy encapsulated (SPST) relay

Track Mount Series

- R-10T Single (SPDT) relay with an activation LED
- R-14T 4-gang (SPDT) relay with 4 activation LEDs
- R-20T Single (DPDT) relay with an activation LED
- R-24T 4-gang (DPDT) relay with 4 activation LEDs

Steel Enclosure Series

- R-10E Single (SPDT) relay with an activation LED
- R-14E 4-gang (SPDT) relay with 4 activation LEDs
- R-20E Single (DPDT) relay with an activation LED
- R-24E 4-gang (DPDT) relay with 4 activation LEDs



Product Overview

Multi-voltage operation

Activation LEDs

Easy and flexible installation

Reliable and robust design

Multi-purpose field installation

System Sensor's multi-voltage conventional relays are used for high-current switching applications such as fan and damper assembly control, door control, air handling unit controls, and other types of system interfacing.

The R-10T/20T and R-14T/R-24T models are multi voltage relays with terminal strip field wiring connections, mounting track, and hardware. The R-10T is a single FORM-C (SPDT) relay with a red activation LED, and the R-14T is a four-gang 1 FORM-C (SPDT) relay with four red activation LEDs. The R-20T is a single 2 FORM-C (DPDT) relay with a red activation LED, and the R-24T is a four-gang 2 FORM-C (DPDT) relay with four red activation LEDs.

The R-10E/R-20E and R-14E/R-24E are similar to the T-series track mount relays, but they are mounted into a steel enclosure. The enclosure has a removable front cover that provides easy access and an LED viewing hole on the top of the cover.

PR-1/PR-2/PR-3 are epoxy encapsulated multi-voltage relays. They are single-pole double-throw relays that use a red LED as a visible indication of relay coil energization. PR-3 is identical to PR-2, except it has an extra pair of wires for redundant power input.

Model EOLR-1 is an epoxy encapsulated, single-pole single-throw, normally open relay that can be used as an end of line device in fire alarm systems, e.g. to supervise power supplies.



Specifications: R-10T/R-14T/ R-20T/R-24T

Operating Voltage

18 – 35 VDC, 18 – 35 VAC, 115 VAC, 230 VAC

Operating Current

20 mA DC max. @ 24 VDC, 24 VAC, 115 VAC,
230 VAC (R-10T/R-14T)
40 mA DC max. @ 24 VDC, 24 VAC, 115 VAC,
230 VAC (R-20T/R-24T)

Operating Temperature

–40°F to 158°F (–40°C to 70°C)

Humidity Range

10% – 93% non-condensing

Dimensions

R-10T/R-20T: 2.5"L × 3.35"W × 1.2"H
R-14T/R-24T: 10"L × 3.35"W × 1.2"H

Contact Ratings

24 VDC: 7 A with L/R = 5 mS
120 VAC: 10 A
120 VAC: 1/6 HP
230 VAC: 7 A

Specifications: EOLR-1

Operating Voltage

9 to 40 VDC

Operating Current

20 mA DC max.

Operating Temperature

–22°F to 140°F (–30°C to 60°C)

Humidity Range

10 – 93% RH

Wire Length

8" minimum

Contact Ratings

120 VAC: 0.5 A max. (resistive load)
30 VDC: 3 A max. (resistive load)

Specifications: R-10E/R-14E/ R-20E/R-24E

Operating Voltage

18 – 35 VDC, 18 – 35 VAC, 115 VAC, 230 VAC

Operating Current

20 mA DC max. @ 24 VDC, 24 VAC, 115 VAC,
230 VAC (R-10E/R-14E)
40 mA DC max. @ 24 VDC, 24 VAC, 115 VAC,
230 VAC (R-20E/R-24E)

Operating Temperature

–40°F to 158°F (–40°C to 70°C)

Humidity Range

10% – 93% non-condensing

Dimensions

R-10E/R-20E: 5.1"L × 3.75"W × 2.5"H
R-14E/R-24E: 11"L × 5.3"W × 2.5"H

Contact Ratings

24 VDC: 7 A with L/R = 5 mS
120 VAC: 10 A
120 VAC: 1/6 HP
230 VAC: 7 A

Specifications: PR-1

Operating Voltage

18 – 35 VDC, 18 – 35 VAC, 120 VAC

Operating Current

15 mA DC max. @ 24 VDC, 24 VAC, 120 VAC

Operating Temperature

–40°F to 158°F (–40°C to 70°C)

Humidity Range

10 – 93% RH

Wire Length

8" minimum

Dimensions

0.87"H × 2.01"W × 1.42"D

Contact Ratings

24 VDC: 7 A with L/R = 5 mS
120 VAC: 7 A max. (0.35 PF)
250 VAC: 10 A resistive
30 VDC: 10 A resistive

Specifications: PR-2/PR-3

Operating Voltage

10 to 40 VDC

Operating Current

30 mA DC max.

Operating Temperature

–40°F to 158°F (–40°C to 70°C)

Humidity Range

10 – 93% RH

Wire Length

8" minimum

Dimensions

0.91"H × 1.65"W × 1.22"D

Contact Ratings

120 VAC: 10 A max. (resistive load)
120 VAC: 7 A max. (0.35 PF)
250 VAC: 10 A max. (resistive load)
30 VDC: 10 A max. (resistive load)



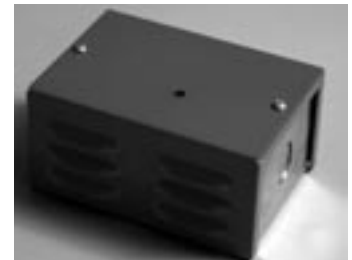
PR-1



EOLR-1



PR-3



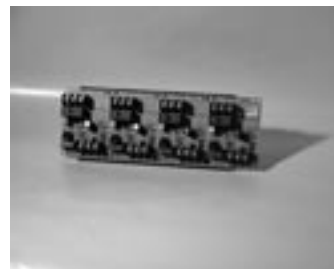
R-10E & R-20E Enclosure



PR-2



R-10T



R-14T



R-14E & R-24E Enclosure

System Sensor Sales and Service

System Sensor Headquarters

3825 Ohio Avenue
St. Charles, IL 60174
Ph: 800/SENSOR2
Fx: 630/377-6495
www.systemsensor.com

System Sensor Canada

Ph: 905.812.0767
Fx: 905.812.0771

System Sensor Europe

Ph: 44.1403.276500
Fx: 44.1403.276501

System Sensor in China

Ph: 86.29.8832.0119
Fx: 86.29.8832.5119

System Sensor in Singapore

Ph: 65.6273.2230
Fx: 65.6273.2610

System Sensor – Far East

Ph: 85.22.191.9003
Fx: 85.22.736.6580

System Sensor – Australia

Ph: 613.54.281.142
Fx: 613.54.281.172

System Sensor – India

Ph: 91.124.237.1770 x.2700
Fx: 91.124.237.3118

System Sensor – Russia

Ph: 70.95.937.7982
Fx: 70.95.937.7983